

The background of the entire image is a close-up, high-contrast photograph of a glass bottle. The bottle is covered in numerous droplets of condensation, which are highlighted by bright, circular light flares. The glass itself has a textured, possibly etched or ribbed, appearance. The overall color palette is dominated by cool blues and greys, with the white highlights from the light flares providing contrast.

# PAR

## Glass



*Your target is our aim* →



□ Glass Balustrades

# Glass Balustrades



020 8998 9901

[sales@parglass.co.uk](mailto:sales@parglass.co.uk)

When a designer is looking to retain views and reflect light inwards while providing security and safety for those using staircases, balconies and terraces, a **glass balustrade** provides a stylish and contemporary solution.

Blending with most interior and exterior finishes and adding a subtle component to the elevation. **PAR Glass London Ltd** offers toughened glass in a range of thicknesses, to be used externally with a mechanically fixed handrail and internally on mezzanine areas, **staircases and landings**.

This glass is bespoke and made to your required thickness, using toughened glass and a resin interlayer between glass panels.

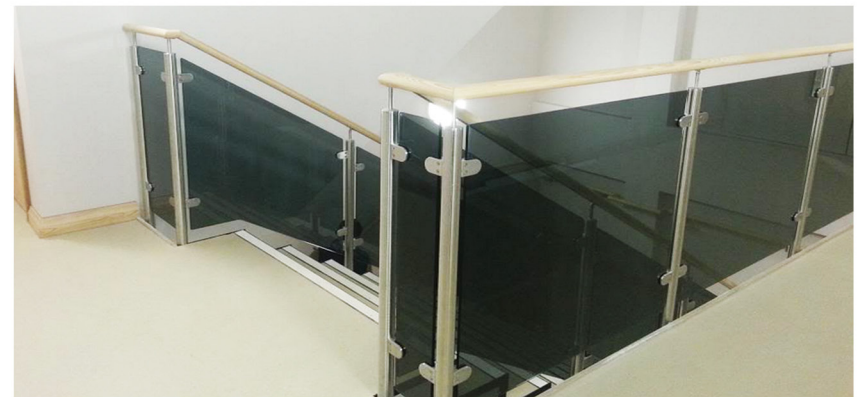


# Balustrade Systems

## Bolting System



## Handrail System



□ Glass Splashbacks

□ Glass Balustrades

□ Shower Screens

□ Bespoke Mirrors

# PAR

## Glass



□ Glass Partitions

□ Glass Doors

□ Sliding Systems

□ Walk On Glass

*Your target is our aim* →

**020 8998 9901**

**sales@parglass.co.uk**

**3-5 Working Days Turnaround**

**Domestic & Commercial**

**Supply & Fit**